

just

ISSUE 131

BEVERLEY

IT'S YOUR MAGAZINE

FREE



A Panto Adventure - Dick Whittington

at Parkway Theatre 13th - 30th December 2025

NEWS, WHAT'S ON, LIFESTYLE, FEATURES, PUZZLES, PHOTOS & MORE

Wishing you a very Merry Christmas and a Happy New Year from the Stipendia team!



Improve business performance - outsource your payroll

Payroll Outsourcing Benefits

- ✓ Cost reduction
- ✓ Better staff productivity
- ✓ High accuracy & reliability
- ✓ e-payslips direct to employees via our app
- ✓ A named personal contact
- ✓ Added value services including HR & Benefits in Kind
- ✓ Useful online information

to arrange a **FREE** meeting
call us on: 0845 308 2288
or visit
www.stipendia.org.uk



Stipendia Payroll Solutions



@StipendiaPay

8/9 DICK WHITTINGTON



4 AMBIENTE TAPAS



5 MAYOR'S CHRISTMAS MESSAGE



12 TEN YEARS OF PARKWAY



22/23 CHRISTMAS LIGHTS



25 REYTA AWARDS



32 MERRY FITNESS



Contributors:

Julian Minshall, Olivia Peace, Rich Manville, Louise Barrett, Andrew Cooper, Shane Cooper, Julie Dowding, Sam Drinkall, Fran Dunning, ert, Josh Harrison, Emma Hetherington, Amanda McConnell, Navigation Wealth Management, Jayne Morgan, Jo Pinkney, Colin Raynor, Ian Richardson, Richard Stott, Marnie Taylor, Nathan Wilson.

REMEMBER! If you see examples of anti-social behaviour or other types of low-level crime, do report it to the appropriate authorities. **POLICE - Emergency 999, Non-urgent 101.**

ANTI-SOCIAL BEHAVIOUR (East Riding of Yorkshire Council) - 01482 393939.

The magazine is available from outlets in Beverley and surrounding areas.

Disclaimer - All the information provided was correct at the time of going to print.

ISSN 2754-9216



Please pass your Just Beverley on or recycle it responsibly.
Printed by: Jadon Press.

www.justbeverley.co.uk

just BEVERLEY

DECEMBER LETTER FROM THE EDITORS



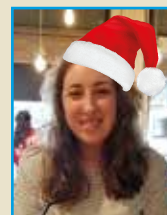
December is here, may we now wish all our readers, contributors and followers a very Merry Christmas, may you have the best time in our great town, embracing the community spirit.

Fortunately in Beverley we have a great variety of entertainment on offer through the year and especially during the festive season. "Something for everyone".

At this time of the year especially, words can inspire, heal, and uplift, hurt and divide. A kind word can brighten someone's day. A smile can make a big difference to someone's day, remember, pause then think about what you are going to say!!

Merry Christmas and a safe and healthy New Year. Thank you for all your support.

Julian.



I can not believe the festive season has arrived so quickly, suddenly it's December and it's Christmas time.

May I take this opportunity to wish you all a Merry Christmas.

At this time of the year, I like nothing better than indulging in a great film, whether that be a Christmas classic, a new release or just an old favourite, it's a great time to "just chill out".

Whatever you do this Christmas, a family walk, meal out, playing games or having a relax and enjoy light hearted conversation with family and friends, have a great time this festive season.

Wishing you good health and happiness.

Olivia.



O2 'Community Publication Award'
Shortlisted Nominee
2017 & 2018



REYTA
'Award Nominee 2016
'Best Newcomer'

GET IN TOUCH WITH US:

Website: justbeverley.co.uk

Email: info@justbeverley.co.uk

Telephone: 01482 679947

Facebook: facebook.com/justbeverley

If you would like copies for your business to distribute to staff and customers, call Just Beverley on **01482 679947.**



AMBIENTE TAPAS OPENS IN BEVERLEY

Award-winning Yorkshire tapas group brings Spanish flavours to Flemingate Shopping Centre

Ambiente Tapas, the award-winning tapas and sherry bar group, officially opened its doors in Beverley on Friday 28th November at 5pm, bringing its signature Spanish hospitality to the Flemingate Shopping Centre.

The new restaurant, Ambiente's sixth site, offers seating for around 120 guests on a fully accessible single level, along with a spacious outdoor terrace for al fresco dining. Guests can enjoy the group's renowned Spanish-inspired menu and drinks list.

Following the opening, Ambiente Tapas Beverley's standard opening hours will be from 12 noon until 10pm Monday to Sunday, giving locals and visitors ample opportunity to enjoy

tapas throughout the week.

Founder Tim Sinclair said: "We're really excited to open in Beverley. After years of refining our restaurants in York, Leeds and Hull, it's exciting to bring Ambiente's signature hospitality and Spanish flavours to the Flemingate Shopping Centre.

"We can't wait to welcome everyone through our doors and share the Ambiente experience."

Reservations are now open and can be made via the Ambiente Tapas website.

Book your table: ambiente-tapas.co.uk/beverley

Ambiente Tapas Beverley:
14 Flemingate, Beverley HU17 0NW
T. 01482 690 669
E. beverley@ambiente-tapas.co.uk



SUNDAY 14 DECEMBER: BEVERLEY FESTIVAL OF CHRISTMAS

The Beverley Festival of Christmas, supported by The Beverley Arms, will return for its 29th year, transforming the historic town into a Christmas shoppers' wonderland with more than 120 stalls.

Santa and his reindeer will be joining the celebrations as part of the parade from 10am and there will be plenty to keep the whole family entertained, with fairground rides, food and drink, amazing Christmas gifts, birds of prey and the sound of brass bands drifting through the December air.

The parade will travel from Wednesday Market through to Saturday Market where there will be a reindeer pen.

North Bar's Georgian Quarter will also feature traders from East Yorkshire and an interactive ice sculpture.

Alongside the Festival of Christmas, those looking for a break from the crowds can pop into Beverley Guildhall, visit: eastridingmuseums.co.uk for more information or Toll Gavel United Church for Christmas tunes, local choirs and refreshments on offer throughout the day, see: tollgavelchurch.org.uk



CHRISTMAS MESSAGE FROM THE MAYOR OF BEVERLEY, CLLR ALISON HEALY

As we approach the festive season, I want to take a moment to reflect on what makes Beverley such a special place and why I, as someone born and bred in Beverley, feel so privileged to be the town's 431st Mayor. Our historic market town is not only rich in heritage and tradition, but in the strength, kindness, and generosity of its people.

This year, we have seen our community come together in so many ways - in our neighbourhoods, schools, churches, and through the work of Beverley Town Council.

From supporting local charities and volunteers to helping community groups thrive through partnership grants, Beverley continues to show what can be achieved when we work hand in hand.

One of the highlights of 2025 has been how we came together to honour those who made the

ultimate sacrifice for our town and our country. The commemorations around VE Day and VJ Day were truly memorable - gathering in the Memorial Gardens and enjoying the beautiful concert at St Mary's Church reminded us of the enduring importance of remembrance and gratitude.

I want to pay tribute to the incredible efforts of our local volunteers, community organisations, and charities who give their time and energy to make life better for others. Your dedication is the heartbeat of our town.

As we celebrate Christmas, let us cherish these connections and look forward to a new year filled with hope, compassion, and opportunity. On behalf of Beverley Town Council, I wish every resident a joyful Christmas and a peaceful, prosperous New Year.

**Warmest wishes,
Cllr Alison Healy, Mayor of Beverley.**



MOLESCROFT BEVERLEY PETANQUE CLUB REWARDED BY THE PARISH COUNCIL

Molescroft Beverley Petanque Club achieved success in the Yorkshire Petanque Team, finishing 3rd in the National Petanque Inter Regional Tournament 2025.

Every year Petanque England organises the National Inter Regional tournament, usually in September. This year the event was held at Sandy Bay Holiday Village, Weston Super Mare with 800 competitors and two hundred officials taking part in the tournament over two full days of competition.

Earlier this year Yorkshire Petanque held its qualifying tournament at Heckmondwike.

Twelve clubs qualified to represent Yorkshire in the National Tournament and two teams, with six players from Molescroft Beverley Petanque Club: Thierry Condette (coach), Nikki Driscoll,

Wick van Rijn, Suham Sidani, Alan Hayton and Ian Pomfret. Most of the qualifying clubs Leeds, Wetherby, Huddersfield have been established for around twenty five years and more. Molescroft Beverley Club however was formed five years ago and three of the players in the team Nikki, Alan and Ian have only been playing for just over a year.

In the National Tournament the club won 14 games, beating teams representing Kent, Wales, Scotland, Anglia and Heart of England helping to secure an overall position of 3rd place for Yorkshire out of twelve regions taking part.

Chair of the Molescroft Parish Councilor Adrian Costello commented, "We recognise how much work and dedication has gone into the Petanque Club, they help raise the profile of Molescroft locally and now nationally with their participation



in the National Inter Regional Competition. For this we are delighted to present them with the Millennium Cup, Molescroft Jubilee Award"

Suham added, "It is amazing what we have achieved in such a short time, putting Molescroft on the map nationwide".

If you wish to get involved contact **suham@thecroft11.karoo.co.uk** They play on Tuesday, Thursday and Saturday from 1pm - time's change when the clocks change.

INVESTORS IN COMMUNITY - A NEW WAY TO GIVE BACK

The community spirit in Beverley is thriving and plenty of local businesses are already doing more good than they realise.

At Investors in Community, we help you capture that effort in one place so you can see the difference you're making right here in your town. To the charities and community groups across Beverley, we want to help all of you. All you need to do is tell us what you actually need. Cash for a project, people to pitch in, specialist skills, or simple items that would make your work easier. Big or small, your requests deserve to be seen.

For Beverley businesses, you get access to a live marketplace of local projects. You can donate, volunteer, offer pro bono help, or gift items. Every action is logged and verified automatically, so you spend your energy doing good instead of wrestling with admin. As part of our ongoing Charity Impact Project, local charities can combine forces, share resources and make every pound stretch further. When charities collaborate, each penny, hour or item donated by businesses goes further too. Investors in Community is here to help Beverley businesses make your giving clearer, smarter and rooted in the town you care about. If you want your impact to land where it matters, come get involved.

Contact details: Web: **www.investorsincommunity.org**
Email: **emily.blake@investorsincommunity.org**



SPREADING CHRISTMAS CHEER: HOME INSTEAD'S "BE A SANTA" CAMPAIGN

With the festive season fast approaching, the team at Home Instead is launching its heartwarming "Be A Santa" campaign, bringing together local school children and the community to share the spirit of Christmas with older people who may be lonely or isolated.

Through the generosity of Pocklington Infants, Pocklington Junior School, and Home Instead this initiative aims to collect Christmas gifts that will truly make a difference.

Why "Be A Santa"?

At the heart of Home Instead's, work is a commitment to companionship care, emotional support, and building relationships, not just delivering tasks. Their local team specialises in helping older adults to remain connected, valued, and supported.

Yet, the holiday season can be especially difficult for those who live alone or who feel disconnected. Home Instead's "Be A Santa" campaign recognises this by turning celebrated tradition into an act of kindness, bridging generations and communities.

Partners in Giving: Local Schools Join In

Children from the schools are invited to donate small gifts that can bring a smile to an older person's face. Whether it's a warm blanket, a box of chocolates, or a homemade card.

The energy and goodwill of the children are at the heart of the campaign. Their enthusiasm brings joy and helps raise awareness of loneliness in older age. For many young pupils, this may be their first time thinking about the challenges older generations face, particularly at Christmas.

Who Will Receive These Gifts?

Thanks to the generosity of the school community and Home Instead, the collected gifts will be shared among three incredible local organisations:

Butterflies Memory Loss Support Group, supports people living with dementia and their carers. Their monthly social gatherings, day trips, and luncheon clubs provide connection, purpose, and much-needed peer support.

Eternal Benefits, works in some of the city's most underserved communities. Their mission covers food poverty, emergency help, social isolation, and more. They also run a pay-as-you-like café, warm spaces, and support for older people.

The Salvation Army offers care, support, and belonging to people of all ages.

The Impact of Giving

These gifts are more than just physical items; they're symbols of company, remembrance, and



compassion. Even a simple present can help someone feel seen and appreciated.

By involving children, Home Instead is encouraging intergenerational empathy. The children are learning early on about kindness, generosity, and social responsibility. If you would like to contribute a gift to Home Instead's campaign, you can drop it in to the office on **Molescroft Farm, HU17 9FS.**



SSAFA AT CHRISTMAS - THEY NEED YOUR HELP

At Christmas, while we celebrate with family and friends, it's important to spare a thought for those who have served our country.

Many veterans and their families face challenges, some loneliness, financial hardship, or the lasting effects of service that can feel especially heavy during the festive season.

SSAFA, the Armed Forces charity, offers vital support, from practical help to emotional care, ensuring no one who has served feels forgotten.

Their work reminds us that the freedoms and peace we enjoy were earned through the dedication and sacrifice of our Armed Forces community.

This Christmas, honour our veterans with gratitude, kindness, and support, volunteering, or simply reaching out, to show that their service continues to be valued and remembered.

SSAFA needs volunteers, please get in touch.

Tel: 01964 552 837
Email: eyorks.branch@ssafa.org.uk
Website: ssafa.org.uk





the **Armed Forces** charity

Your Veterans Need You!

We wish you a Merry Christmas and a Happy New Year

SSAFA urgently need a Branch Secretary, admin support and caseworkers.

The Branch Secretary serves as key figures in supporting those who have served their country, ensuring they receive the assistance and resources when in need after protecting our country.

It's a role that requires dedication, compassion, and a commitment to serving others, offering immense personal satisfaction and the opportunity to positively impact the community.



If you think you can help, please get in touch:
Tel: 01964 552 837
Email: eyorks.branch@ssafa.org.uk
Website: ssafa.org.uk

CHRISTMAS MESSAGE FROM THE CHAIRMAN OF EAST RIDING OF YORKSHIRE COUNCIL

As we approach the festive season, I would like to wish all residents of the East Riding a very Merry Christmas and a Happy New Year.

This is a season for togetherness - a time to share laughter, kindness, and those special moments that make lasting memories.

Whether you're gathered around the table, enjoying festive lights, or simply taking time to rest, I hope your Christmas is filled with warmth and joy.

I would also like to express my heartfelt thanks to everyone who contributes to making the East Riding such a wonderful place to live - from volunteers and community groups to local

businesses and our dedicated council staff. Your efforts make a real difference every day.

As we look ahead to the New Year, let us hold on to hope. Whatever challenges may come, we can face them together- with compassion, resilience, and a shared commitment to making the East Riding a place where every family feels supported and valued.

On behalf of the Council, I wish you and your loved ones a Merry Christmas and a bright, hopeful New Year.

Councillor Liam Dealtry
Chairman of East Riding of Yorkshire Council



BEVERLEY BLOOMING WITH KINDNESS

Islay Bloom on Dyer Lane is inviting everyone to join in "Spread Kindness Across Beverley," a campaign that celebrates community, connection, and the true spirit of giving.

Beverley Blooms with Kindness with each purchase, customers are entered into a draw to win one of three beautifully curated gift boxes



and receive a "Spread Kindness" postcard featuring Islay the Deerhound, the shop's namesake, captured outside the boutique's festive storefront.

Each postcard carries a simple but meaningful message: "Someone in Beverley thought of you today and wanted to remind you that kindness connects us all. Together we make our community bloom..."

Share your postcard with a friend, neighbour, or colleague. When it is returned before December 20th, that person will also be entered into the draw.

Pop in, discover the perfect gift, and help spread kindness - one purchase, one postcard, and one smile at a time.

How to Take Part: Visit Islay Bloom, 5 Dyer Lane, Beverley (HU17 8AE). Make a purchase to be entered automatically into the prize draw. Take your "Spread Kindness" postcard and



pass it on to someone you'd like to brighten this Christmas. When they return it before December 20th, they will have their own chance to win.

Campaign runs until December 20th. Find Islay Bloom on Instagram and Facebook: @**islaybloombeverley**

CHRISTMAS MESSAGE FROM THE CHAIR OF BEVERLEY & DISTRICT CHAMBER OF TRADE

My Christmas wish for you. Christmas is a magical and special time of year for giving and receiving gifts from loved ones, friends, clients and colleagues. Christmas is the time to buy or make that perfect gift, the gift that means much more than just unwrapping another present.

Family time is important, and we must make time for our families, don't forget Uncle George's socks! This Christmas let the twinkling lights remind you of the potential within you.

The festive season is a time for powerful reflection and renewal; inside us we have tiny seeds of hope and promise of a mighty tree and every small effort you make carries the potential for enormous success in the coming year.

Don't let the past dim your future, use the warmth of Christmas to melt away your doubts and light a light within you for your business to grow into a mighty tree. You have the resilience to overcome

any challenges, but never forget challenges happen to enhance growth to achieve your hopes and dreams, use the upcoming end of year as a launchpad for success. Let this festive period fuel your motivation to set new goals, dreams and embrace gratitude.

Step into the new year with positivity, motivation and growth. The future in Beverley is bright, vibrant and entirely yours to shape.

I am enormously proud to be the Chair of the Beverley & District Chamber of Trade, we welcome you with open arms to join us, we promise you a positive environment to move your business forward, no matter the size of your business. We meet at various venues on the last Wednesday of the month: <https://beverleychamber.co.uk/>

Shaun Dart, Chair Beverley Chamber of Trade - "BCoT"





Set Sail for Dick Whittington

Well hello there, ladies and gentlemen, boys and girls! It's time to gather round, grab your popcorn and chocolates, (or maybe a mince pie), and get ready for a good old-fashioned dose of festive fun, yes you guessed it, it's panto time!

This year Parkway welcome's back TaleGate Theatre Productions and not just any panto, "oh no it isn't"! "Oh yes it is"! "It's Dick Whittington"!

What is Dick Whittington all about?

The story of the poor lad who packed his knapsack, popped his best cat under his arm, and set off to Bevonian to seek his fortune. They say the streets are paved with gold. It's not long before Dick soon finds out it's more cobblestones and chaos than coins, gold and crowns!

Dick's not alone on his adventure. He's got his trusty feline sidekick (the real brains of the operation), a villain or two lurking in the shadows, and of course, the ever-glamorous Dame larger than life, louder than a brass band, and ready to keep you laughing from curtain up to the final bow.

You can expect plenty of songs you know, jokes so bad they're good, and a few cheeky winks for the grown-ups too!

What happens in the Panto?

You will be sailing the seven seas, battling pesky rats, and cheering Dick all the way to becoming Lord Mayor of Bevonian, yes, Lord Mayor of Bevonian. Which isn't bad for a lad who started with just a dream and a tabby cat!

So warm up your vocal cords, because you will need your best boos, hisses, and hearty "It's behind you!"s to make the magic happen.

Sit back and dream

So sit back (or perch on the edge of your seat), suspend your disbelief, and prepare for glitter, giggles, and good times galore. Dick Whittington is the ultimate rags-to-riches tale, told the pantomime way, full of heart, humour, and heaps of sparkle.

It's time to book your tickets, get ready for this unmissable adventure and sail into Christmas so keep an eye on TaleGate's social media pages for more sneak peeks of the production.

Dick Whittington will run at Parkway Cinema from 13th - 30th December 2025. Box Office: 01482 968090
Get your tickets today by visiting: parkwaycinemas.co.uk



Panto with son at the helm



Competition Winner

Our congratulations go to **the Pilsworth Family** who won the competition for the Family Panto Tickets to watch Dick Whittington at Parkway Cinema and Theatre this Christmas.



Performance Times

Saturday 13th December - 12pm & 4pm
Sunday 14th December - 12pm & 4pm
Saturday 20th December - 12pm & 4pm
Sunday 21st December - 12pm & 4pm
Tuesday 23rd December - 12pm & 4pm
Wednesday 24th December - 10am, 1pm & 4pm
Friday 26th December - 12pm
Saturday 27th December - 12pm
Sunday 28th December - 12pm
Monday 29th December - 12pm
Tuesday 30th December - 12pm



EVERY THURSDAY

(Doors open 9.30am)

Join us for a free brew and enjoy some great films on Beverley Parkway's Big Screen. Only £5 (or £6 for newer releases) with drink and biscuits included. Aimed at 55s & over. Films subject to change.

Thursday 4th December -

Nuremberg (£6)

Starring: Russell Crowe, Rami Malek, Leo Woodall, John Slattery, Colin Hanks.

The Running Man (£6)

Starring: Glen Powell, William H. Macy, Lee Pace, Michael Cera, Emilia Jones.

White Christmas 1954 (Dementia Friendly)

Starring: Bing Crosby, Danny Kaye, Rosemary Clooney, Vera-Ellen, Dean Jagger.

Thursday 11th December-

Eternity (£6)

Starring: Miles Teller, Elizabeth Olsen, Callum Turner, John Early, Olga Merediz.

Wicked 2 (£6)

Starring: Cynthia Erivo, Ariana Grande, Jonathan Bailey, Ethan Slater.

Thursday 18th December -

Eternity (£6)

Starring: Miles Teller, Elizabeth Olsen, Callum Turner, John Early, Olga Merediz.

Wicked 2 (£6)

Starring: Cynthia Erivo, Ariana Grande, Jonathan Bailey, Ethan Slater.

It's A Wonderful Life

Starring: James Stewart, Donna Reed, Lionel Barrymore, Thomas Mitchell.

Thursday 25th December -

No Senior Screen.



CHRISTMAS CLASSICS ON THE BIG SCREEN

Find out more at:

<https://beverley.parkwaycinemas.co.uk/xmas-classics>

These are the films scheduled to open in December - all are subject to change. Check out up-to-date cinema listings at www.justbeverley.co.uk/cinema-times



From 5th December

Five Nights at Freddy's 2

Starring: Josh Hutcherson, Matthew Lillard, Elizabeth Lail, Piper Rubio.



From 5th December

Eternity

Starring: Miles Teller, Elizabeth Olsen, Callum Turner, John Early.



From 12th December

Ella McCay

Starring: Emma Mackey, Jamie Lee Curtis, Jack Lowden, Kumail Nanjiani.



From 12th December

Silent Night, Deadly Night

Starring: Rohan Campbell, Ruby Modine, David Lawrence Brown.



From 19th December

Avatar: Fire and Ash

Starring: Zoe Saldana, Kate Winslet, Sigourney Weaver, Jemaine Clement.



From 19th December

The Housemaid

Starring: Sydney Sweeney, Amanda Seyfried, Michele Morrone, Brandon Sklenar.



From 19th December

The SpongeBob Movie: Search for Squarepants

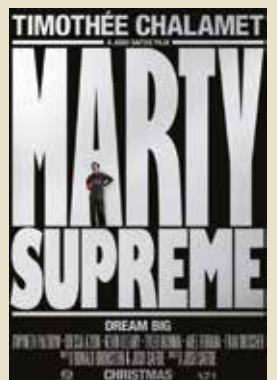
Starring: Clancy Brown, Mark Hamill, Tom Kenny.



From 26th December

Anaconda

Starring: Jack Black, Paul Rudd, Steve Zahn, Thaddeus Newton.



From 26th December

Marty Supreme

Starring: Timothée Chalamet, Fran Drescher, Gwyneth Paltrow, Odessa A'zion.

YOUR LOCAL INDEPENDENT CINEMA



JOIN US FOR SOME GREAT FILMS AND BIG SHOWS THIS WINTER

ETERNITY

In an afterlife where souls have one week to decide where to spend eternity, Joan (Elizabeth Olsen) is faced with the impossible choice between the man she spent her life with (Miles Teller) and her first love (Callum Turner), who died young and has waited decades for her to arrive.

From 5th December.



AVATAR: FIRE AND ASH

Jake and Neytiri's family grapples with grief after Neteyam's death, encountering a new, aggressive Na'vi tribe, the Ash People, who are led by the fiery Varang, as the conflict on Pandora escalates and a new moral focus emerges.

From 19th December.



THE HOUSEMAID

Trying to escape her past, Millie (Sweeney) accepts a job as a live-in housemaid for the wealthy Nina (Seyfried) and Andrew Winchester (Brandon Sklenar). But what begins as a dream job quickly unravels into something far more dangerous - a sexy, seductive game of secrets, scandal, and power.

From 19th December.



ANACONDA

Doug (Jack Black) and Griff (Paul Rudd) have been best friends since they were kids, and have always dreamed of remaking their all-time favourite movie: the cinematic "classic" Anaconda. When a midlife crisis pushes them to finally go for it, they head deep into the Amazon to start filming. But things get real when an actual giant anaconda appears, turning their comically chaotic movie set into a deadly situation.

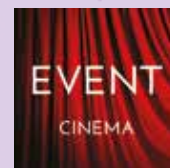
From 26th December.



MARTY SUPREME

Directed by Josh Safdie, Marty Supreme is loosely based on the life of table tennis champion Marty Mauser (played by Timothée Chalamet), a young man in 1950s New York who pursues greatness in the world of table tennis, described as a journey where he "goes to hell and back" to achieve his dream. With a supporting cast that includes Gwyneth Paltrow, Fran Drescher, Odessa A'Zion, and Tyler, the Creator.

From 26th December.



Event cinema offers something a little different to mainstream films. Live and pre-recorded shows beamed in via satellite from all over the world. Here are the latest live streams that you can enjoy on the big screen at Parkway Beverley.

**Thursday 4th December, 7pm &
Friday 5th December, 7pm -**

The World of Hans Zimmer - A New Dimension

The concert, captured live in Krakow, displays the entire spectrum of Zimmer's work and allows the audience to experience his film music with overwhelming intensity.

**Saturday 6th December, 6pm &
Sunday 7th December, 2pm -**

Andre Rieu's 2025 Concert: Merry Christmas (PG)

This holiday season, the magic begins on the big screen. Join Andre Rieu for his 2025 Christmas Concert - "Merry Christmas" and experience joyful carols, beautiful waltzes, and plenty of surprises - it's the ultimate Christmas cinema event!

Wednesday 10th December, 7.15pm -

RBO: The Nutcracker 2025

The magician Herr Drosselmeyer needs to save his nephew. Hans-Peter has been transformed into a Nutcracker.

Saturday 13th December, 6pm -

The MET: Andrea Chenier

Giordano's passionate tragedy stars tenor Piotr Beczala as the virtuous poet who falls victim to the intrigue and violence of the French Revolution.

Saturday 10th January 2026, 6pm -

The MET: I Puritani

For gorgeous melody, spellbinding coloratura, and virtuoso vocal fireworks, I Puritani has few equals.

Wednesday 14th January 2026, 6.45pm -

RBO: La Traviata

At one of her lavish parties, celebrated Parisian courtesan Violetta is introduced to Alfredo Germont.

Thursday 22nd January 2026, 7pm -

NT Live: Hamlet (12A)

Olivier Award-winner Hiran Abeysekera (Life of Pi) is Hamlet in this fearless, contemporary take on Shakespeare's famous tragedy.

PARKWAY BEVERLEY CELEBRATES 10 YEARS IN FLEMINGATE

The force to open before Christmas for Parkway Cinema was there for all to see. On Friday, 18th December 2015, Parkway opened its doors to the public following a soft launch earlier in the week. The new 6-Screen Parkway cinema in Beverley, was ready for the new Star Wars film, "The Force Awakens". Appropriate for Parkway Cinema.

At the time General Manager Cliff Baillie commented, "We look forward to week one being dominated by the phenomenon of Star Wars, but there will be a great selection of fantastic films to enjoy. This is just the start, with live opera, theatre and ballet in our Event Cinema Season starting in January.

"We'll be offering special weekly film screenings which we hope will appeal to a wide and differing audience. We hope we have opened a cinema worthy of the East Riding and we look forward to welcoming everyone in the years to come."

The Parkway Cinema offers six digital screens equipped with Dolby 7.1 sound, and the largest auditorium boasts stunning 4K projection plus a fully equipped stage for live performances.



Parkway looks forward to Thursday 18th December 2025, officially the 10th Anniversary.

Richard Parkes, director of Parkway, commented, "It's hard to believe it's been ten years! We work hard to get the mixture of traditional service and modern technology right, and Beverley has been really welcoming and supportive.

"We genuinely thought COVID might kill us off, but the support throughout that time and the positive response since we reopened are wonderful. It's the team and the customers that breathe life into a cinema, and it's that community feeling that we're most proud of."

For a full decade, Parkway Cinema Beverley, an independent cinema in the Flemingate Shopping Retail Centre has been much more than a place to watch films. It has become a cultural anchor, a community hub, and a testament to what passionate, locally driven arts spaces can



accomplish. Parkway is one of the most successful independent cinemas in the country, still family-owned and run by the Parkes family and their close-knit team.

As they celebrate their 10-year anniversary in Beverley, the cinema reflects on a journey shaped by creativity, resilience, and a steadfast belief in the power of storytelling.



Andrew Cooper, Multi Site General manager added, "It's an incredible honour to celebrate ten years of Parkway Cinema Beverley. I have been fortunate to work for Parkway for twenty-one years, and I still remember being involved in recruiting the very first team here in Beverley a decade ago, before we opened our doors to the lovely local community.

"To now be managing this wonderful cinema for the past three years feels like coming full circle, and it's something I'm truly proud of".



Andrew continued, "From the very beginning, Parkway Beverley became more than just a place to watch films. It grew into a meeting point, a memory maker, and a real heartbeat of the town. One of my favourite parts of each day is stepping into the foyer and catching up with our regular customers.

"You start to know who never misses a big blockbuster, who prefers a quiet midweek matinee, and who's always eager to chat about last night's big twist. Those conversations remind me how deeply this cinema is woven into everyday life of this lovely town".

Parkway Cinema Beverley has, over the years, continued to grow a sense of community, which is perhaps the cinema's greatest achievement.

Having had Q&A sessions with filmmakers,



themed festivals, and special screening times, supporting local charities has been a big plus for regular film buffs / film connoisseurs.

Richard Parkes added "The last decade has been dominated by blockbuster franchises and the growth of streaming at home, but there's still an audience for intimate, thought-provoking cinema.

"We've been lucky enough to cultivate a loyal community of film lovers who come not only for the screenings but also for the conversations that follow. Cinema is a community event, a group experience, and we like to think we're part of that community spirit, a little hub in the heart of Beverley".



Parkway staff are polite, well-versed, welcoming and know regulars by name. One regular commented, "It feels like an extension of my living room, comfortable and relaxing."



AWARD WINNING FERGUSON FAWSITT, WHERE MEMORIES ARE MADE

Every year, the REYTAs, organised by Visit Hull and East Yorkshire (VHEY), look to recognise the excellence across the East Riding hospitality business attracting and entertaining visitors from far and wide.

Allen at The Ferguson Fawsitt was delighted to be shortlisted for the event. He was overjoyed as he heard their name announced and took centre stage as one of the winners of the 15th annual Remarkable East Yorkshire Tourism Awards (REYTAs) winning Remarkable Pub of the Year.

Winning the Remarkable Pub of the Year award especially in the run up to the festive season is more than a badge of honour, it's a celebration of community, hard work, and the spirit that brings people together at the year's most meaningful moment.



At its heart, the award recognises the dedication poured into creating a place where locals and visitors alike feel welcome, valued, and at home.

It acknowledges the countless hours spent perfecting great hospitality, nurturing a warm atmosphere, and offering food, drink, and experiences that genuinely resonate with people far and wide.



Allen commented, "During the festive season, this achievement takes on an even deeper significance. Christmas is a time when pubs become gathering points for families, friends, colleagues, and neighbours, each seeking comfort, connection, and celebration."

"Winning such an award signals to the community that the pub is not just a venue but a trusted hub where memories are made. It boosts staff morale, reinforcing that their efforts matter and are recognised, especially during the busiest and most demanding time of year."

The Ferguson Fawsitt under the guidance of Allen Slinger has gone from strength to strength. It provides a sense of pride and belonging for the village, the pub team, it's a moment to reflect, appreciate, and continue working together and support The Ferguson Fawsitt as they continue to strive for excellence.

Allen continued, "The award is for everyone who walks through the door, it makes the season feel just a little more special. Merry Christmas".

Enjoy a laugh at The Ferguson Fawsitt during the festive season.

We are happy to welcome back our monthly comedy night. Stand Up at Fergie, the last of 2025, on 13th December 2025. Tickets now available to purchase at the bar. £10 per ticket. Doors Open 7pm, showtime: 8pm.



The
Ferguson
Fawsitt



OPENING HOURS

MON: 12:00-LATE

TUE: 16:30-LATE

WED-SAT: 09:30-LATE

SUN: 12:00-22:00

What's on at the Fergie

OPEN
7DAYS

1st Thursday of the Month - Bingo from 2pm

4th Thursday of the Month - Live Music

1st Friday of the Month - Quiz Night from 8.45pm

Saturday 13th December - Stand Up At The Fergie



WEDNESDAY TO SATURDAY:
AFTERNOON TEA 12PM to 5PM
www.fergusonfawsitt.co.uk
tel: 01482 526317

CHRISTMAS MENU
AVAILABLE FROM
WED 3RD DEC - WED 24TH DEC
(EXCLUDING SUNDAYS)
2 COURSE £27.50 | 3 COURSE £34.95

FOOD HOURS

MON:
12:00-19:30

WED-SAT:
09:30-20:00

SUN:
12:00-18:30

DO GROWTH COMPANIES ALWAYS MEAN GOOD RETURNS?

Growth companies have been at the heart of the record-breaking rise of US stock markets in recent times. The dominance of the Magnificent Seven in the S&P 500 - including household names such as Apple and Nvidia - means most investors have exposure to growth companies in their portfolios. But do these businesses always mean good returns for investors?

Where will the next Amazon, Apple or Nvidia come from? That's the billion-dollar question and one that most investors would love to know the answer to. The rapid expansion of these and other growth companies over recent years has driven huge increases in US equity markets. One of their key characteristics is high earnings growth, especially in their early years. As an example, between 2014-2024, Amazon converted a loss of US\$ 241 million into a profit of US\$ 59 billion¹. Over the same period, Apple's earnings accelerated from US\$ 39.5 billion to US\$ 94 billion².

Innovation and market dominance

Successful growth companies need to either offer something new or provide existing products at a cheaper price. Tech giant Nvidia is arguably the most well-known example of a growth company in recent years. The company designs and manufactures powerful micro-chips for a broad range of fast-growing industry sectors such as data centres, AI and robotics. And the transformative uses of AI are attracting many more new entrants to the market, large and small.

Yet AI isn't the only story in town. In 2024, Danish pharmaceutical company Novo Nordisk was

briefly the most valuable company in Europe³. It enjoyed a more than three-fold increase in its share price between 2021-2024 thanks to the success of diabetes and weight-loss drugs Ozempic and Wegovy⁴.

Beware of the (non) dividend

When starting out, most potential growth companies will not be profitable. They will rely on borrowing and external investment to grow. Rather than paying dividends, management's focus will typically be on strengthening innovation and technological edge and increasing sales. Even when successful, growth companies will usually only pay a small dividend, at best. On the upside? Investors will normally be rewarded with a much higher share price.

Success in scaling up

A further trait of growth companies is the need to 'scale up'. Prioritising the product range means that, once this is in place, the business can expand and start to make a regular profit. For example, once code for a new chip has been written, it can be replicated cheaply. Nvidia's operating profit margin (the company's sales divided by the cost of producing those sales, such as salaries, raw materials and overheads) was a staggering 61% in the three months to July 2025. By comparison, the equivalent figure for auto manufacturer General Motors was 3.8%⁵.

Growth companies don't need to be tech-focused or even listed. Privately-held UK sports clothing maker Gymshark was founded in 2012. It took two months before it received an order on its website. Yet by 2024 it had generated annual sales of £607

million and profits of £11.9 million⁶. Its success to-date reflects its ability to scale and adapt to changing market demands.

Sales growth is no guarantee of success

The adjustment necessary as a company shifts from generating strong sales to targeting profitable sales is not easy. Generating the former without the latter causes the failure of many growth-type companies. It is not enough to have a great idea - growth companies must be able to convert their sales into cash earnings too.

Take flexible office space company WeWork. It was once the world's most valuable start-up, worth \$47 billion at its peak⁷. Following the pandemic, its market shrank as people spent more time working from home. Yet the company was still committed to expensive leases. Its value shrank by more than 90% by the time it went bankrupt in 2023. Exercise bike manufacturer Peleton is another example of a company that struggled once the pandemic was over and people returned to their gyms. The company failed to adapt once its captive market disappeared.

Despite telling good stories, these companies failed because they overestimated the strength of their potential market. Moving into new markets (WeWork) or new products (Peleton) before strengthening their key product damaged their viability.

Yet for successful growth companies, the rewards can be substantial. While Amazon still dominates online shopping, it has used its scale and expertise to grow in other areas.



Invest with confidence

Investing can be daunting. Where's the best place to put your savings? What level of risk are you willing to take? How might fluctuating markets affect your investment? And how can you monitor performance?

We understand. Which is why we aim to take the stress out of the process. At St. James's Place, our distinctive approach to investment management calls on the expertise of some of the world's leading fund managers. Which means healthy long-term investment performance is within your grasp. What's more, being local means we're here to help whenever you need us.

The value of an investment with SJP will be directly linked to the performance of the funds you select, and the value can therefore go down as well as up. You may get back less than you invested.

Call today to find out more

T. 01482 379504
E. navigationwm@sjpp.co.uk
W. www.navigationwm.co.uk



Navigation Wealth Management is an Appointed Representative of and represents only St. James's Place Wealth Management plc (which is authorised and regulated by the Financial Conduct Authority) for the purpose of advising solely on the group's wealth management products and services, more details of which are set out on the group's website www.sjp.co.uk/products. The 'St. James's Place Partnership' and the titles 'Partner' and 'Partner Practice' are marketing terms used to describe St. James's Place representatives.



For example, its Amazon Web Services (AWS) provides the infrastructure that supports many governments and businesses. Such is its importance world-wide, a temporary global outage in October made global headlines.

Watch out for the slowdown

Growth companies can provide an attractive counter-balance to more mature businesses, not least as part of a diversified portfolio. But the potential for higher returns means a higher level of risk. When growth companies no longer meet market expectations on their future prospects, they become 'ex-growth'. The accompanying downgrade in valuation can be swift.

As well as a strong business model, many successful growth businesses have dynamic leadership. Apple's Steve Jobs, Jensen Huang at Nvidia as well as Elon Musk of Tesla and SpaceX and Jack Ma at Alibaba - these are all business leaders who have nurtured their companies through initial high growth phases and come out the other side.

Investors should remember that the best growth companies (must) evolve. Eventually, gravity takes hold. Even the fastest growth companies will slow unless they can adapt and innovate.

Sources:

1-7 Bloomberg - as at 12 November 2025.



NORTH LINCOLNSHIRE'S PREMIER AUCTIONEERS AND VALUERS

- Friendly and professional service
- Regular online auctions
- Free auction assessment
- Appraisal and collection service
- Probate valuations
- We can also buy Gold and Silver

For appointments or inquiries, please reach out to us on **01724 505005** or **07941 352789**. Alternatively visit our website for the latest auctions and news.

Potters Auction Saleroom LTD Auctioneers and Valuers

The Old School, 42a Northfield Road, Messingham, Scunthorpe DN17 3SA. Tel: 01724 505005

paul@pottersauction.co.uk www.pottersauction.co.uk

Jadan

Print that gets you noticed

Jadan Press are a leading family run commercial and trade printer based in Hull.

With over 25 years experience, we are renowned for producing exceptionally high quality print, design and finishing.

**BROCHURES LEAFLETS
POSTERS CALENDARS PADS
LARGE FORMAT PRINTING
STATIONERY MAGAZINES
SAFETY SIGNAGE BANNERS
LABELS DIE-CUTTING
and much much more**

2026 CALENDARS NOW AVAILABLE



Calendars are one of the most effective ways of advertising and a fantastic way of placing your brand or cause in front of the customer for a whole year.

From Desktop Calendars to Wall Calendars and Wallplanners, we can design and print in a range of formats and sizes to suit your brand.



01482 610902

sales@jadan-press.co.uk www.jadan-press.co.uk

Rainbow House, Kimberley Street, Hull, HU3 1HH



jadan_press



jadanpress

FESTIVE WARMTH AT LECONFIELD KENNELS

Leconfield Kennels has taken on and completed the annual deep cleanse and refurbishment to ensure a healthy and comfortable environment for staff and pets to maintain a good environment for all.

Nigel from Leconfield Kennels said, "We take the opportunity every November to give the kennels a deep clean. A thorough clean helps eliminate harmful pathogens, preventing the spread of diseases like kennel cough, parvovirus, and skin infections. This involves disinfecting all surfaces, replacing worn-out flooring, replacing and cleaning toys, bedding which can harbor germs".

Now the cleaning is done, Leconfield Kennels and Cattery kennels look forward to the festive season ahead.

Nigel added, "Christmas is a special time for everyone, including our furry friends. Whether

pets are staying at home or in the kennels over the festive season, their comfort and happiness should come first".

Leconfield Kennels ensure pets have familiar items like their favourite blanket or toy to help them feel secure, keeping routines consistent with regular feeding, exercise, and plenty of affection. While temperatures outside drop, it is always important to remember to make sure animals stay warm and well-hydrated.

It's no surprise that especially at this time of year the staff share a little extra love and playtime to keep tails wagging. A calm, caring atmosphere helps every pet enjoy the Christmas spirit, making it a joyful time for both animals and their humans.



**Leconfield Kennels and Cattery, Arram Road, Leconfield, HU17 7NP.
Office: 07360 276707.
Out of hours: 07946 193269.
www.leconfieldkennelsandcattery.co.uk**

**Our drop off and collection times now operate throughout the year. Drop off: after 2PM.
Collection: Before 12 Midday. Unfortunately we will not be able to accept pets outside these times.**



MR CARPETS

CARPET AND FLOORING SPECIALISTS

↓ TAKE A LOOK AT OUR QUALITY INSTALLATIONS ↓

37 YEAR ANNIVERSARY

37 years in business

37 years of good, honest service

We wish everyone a Merry Christmas and a Happy New Year




Check out our Facebook and Google reviews

01482 872134 [f mrcarpetsbeverley](https://www.facebook.com/mrcarpetsbeverley)

E: mrcarpets@hotmail.co.uk
3 Becks North, Beverley, HU17 0PR

Four Generations, Giving Over 130 Years Service

| | | | |
|----------------------|----------------------|-----------------------|---------------|
| Herbert 1870-1962 | Eardley 1908-1986 | Geoffrey 1939-2015 | David 1964 |
|----------------------|----------------------|-----------------------|---------------|



Golden Charter Funeral Plans

SAIF INSURANCE

- Funerals Respectfully Conducted
- 24 Hour Out of Hours Service
- Free Advice & Support
- Private Restrooms
- Prepaid Funeral Plans Available
- Finance Options Available



Tel: 01482 844695
www.hkempandsonltd.com

259 Hallgate, Cottingham, East Yorkshire, HU16 4BG
Fax: 01482 843898
Email: hkempandsonltd@gmail.com



HANDYMAN IAN SENDS CHRISTMAS GREETINGS

As we move to the festive season, Beverley's Handyman Ian Harrison looks forward to a seasonal rest for a few days before planning for 2026. A busy New Year ahead.

Ian commented, "As Christmas and the New Year approaches, it's the perfect time to think about getting your home in order with some essential handyman tasks for 2026. As decorations go up and come down, plans can formulate for change."

"Start by checking for any small repairs, loose handles, curtain rails, picture rails, drawers, cupboard doors, small jobs and make your list for 2026".

Over the festive season, Ian takes stock of his tools, a clean, organising his workspace for a fresh start, investing in new equipment - Santa is always good.

Ian reminds people, "Taking care of simple jobs now sets a strong foundation for a smooth, well-maintained home in the year ahead".

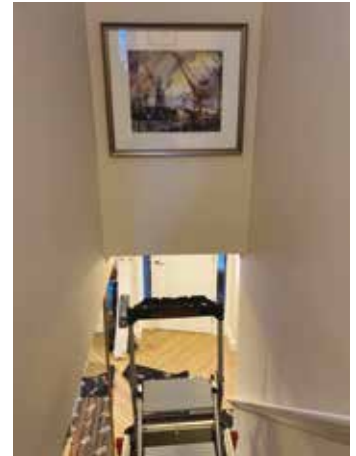
Again this year Ian has sponsored a tree at the Beverley Minster Christmas Tree Festival, as you wander amongst the 150 beautifully decorated trees, see if you can spot his tree. It is a magical way to enjoy the build up to Christmas in the most fantastic of settings.

Have a Merry Christmas and good health for 2026. Ian Harrison.

Mobile: 07970 332373

Email: ianharrison68@icloud.com

Website: www.ian-harrison.com



Follow us on
Facebook and Instagram






HARRISON HANDYMAN

For all your jobs around the home

- Painting, Interior & Exterior
- Mirror & Shelf Installation
- Joinery
- Flat Pack Assembly
- Picture Hanging
- .. and so much more



07970 332373

ianharrison68@icloud.com

www.ian-harrison.com



WHY SLIDING SASH WINDOWS ARE THE PERFECT WINTER CHOICE FOR YOUR HOME

As Winter bites and heating costs keep increasing, homeowners across the region are finding that sliding sash windows provide the perfect blend of classic style and modern energy efficiency.

Gone are the days when sash windows meant draughty rooms and sky-high energy bills. Today's uPVC sliding sash windows, such as those from Quickslide available through Cherry Group, provide exceptional thermal performance that can enhance your home's comfort during the coldest months.

Modern double-glazed sash windows are roughly five times more effective at preventing heat loss than traditional single-glazed wooden windows, thanks to innovative multi-chambered frames that trap warm air inside your home.



This enhanced insulation can reduce heat loss by up to 30%, keeping your living spaces cosy whilst significantly reducing your heating bills.

The secret is in their sophisticated design. Advanced features including 24mm insulated glass units, warm edge spacer bars, and weather seals work together to prevent draughts and stop valuable warmth from escaping.

These windows achieve impressive A-energy ratings, meaning you'll notice the difference even on the chilliest winter mornings.

Beyond energy efficiency, modern sliding sash windows need almost no maintenance - unlike traditional timber frames that require regular repainting and are susceptible to warping in damp weather. A simple occasional wipe-down keeps them looking new for decades.

The appeal of choosing sliding sash windows from Cherry Group is that you don't have to compromise your home's character for performance.

These windows accurately mimic the



elegant appearance of traditional designs while providing advanced thermal efficiency. Whether you reside in a period property or a contemporary home, they add timeless charm while shielding you from winter's harshest weather.

This winter, why settle for watching heat and money escape through your windows? Contact Cherry Group today to learn how Quickslide's sliding sash windows can keep your home warm, lower your carbon footprint, and reduce your energy bills.

Visit our website to explore our Quickslide window designer or why not visit your showroom and see for yourself!

<https://cherrygroup.uk/windows-doors/windows/sliding-sash-windows/>

Tel: 01482 770621

Unit 2, Beck View Rd, Beverley, HU17 0JT.

Email: info@cherrygroup.uk





SEASON'S GREETINGS

From all of the team at Cherry Group



Let us improve your home in 2026

- uPVC Windows and Doors
- Aluminium Windows, Bi-folds and Sliding Doors
- Composite Doors
- Sliding Sash Windows
- Glass Replacements
- Tiled Conservatory Warm Roofs
- Modular Home Extensions & Garden Rooms
- Orangery Roofs & Roof Lanterns
- Composite Cladding & Decking
- Fascias, Soffits and Guttering

VISIT OUR SHOWROOM: Unit 2, Beck View Road, Beverley, HU17 0JT





GET IN TOUCH
01482 770621
www.cherrygroup.uk









LAIRGATE PROPERTY SHOWING ITS TRUE COLOURS

In 1843, A Christmas Carol by Charles Dickens was first published. In the same year The East Ridings Savings Bank opened its doors to provide saving and banking facilities for the community of Beverley.

In the first preface of A Christmas Carol, Charles Dickens wrote; "I have endeavoured in this ghostly little book, to raise the Ghost of an Idea, which shall not put my readers out of humour with themselves, with each other, with the season, or with me."

Just over one year ago Richard Stott of R D Stott Architects took on the task of refurbishing one of Beverley's historic listed buildings, a building with a rich history.

Richard at the time commented, "I am looking forward to taking on this challenge to refurbish and breathe new life into the old East Riding Savings Bank, converting it into two luxury

residential homes for the future occupants. To revitalise the structure, honouring the architectural achievements and craftsmanship of the past while adapting the building for modern use".

Richard who is now looking at completion of the luxury homes in early 2026, continued, "It is important to remember, that with a project of this importance, we need to be able to preserve and restore the original features, using traditional trades, and nurturing this expertise that might otherwise be lost while also adapting it for modern living. I hope the new occupants, will be delighted with its transformation, reflecting on the past while looking to the future".

Preparing the renovation for handover is a rewarding final step in a long and careful process. It's the moment when vision, craftsmanship, and dedication come together to breathe new life into a once-neglected building.

Richard added, "Restoring and converting this building while preserving its character, history, and connection to the community, turning something once forgotten into a place of pride is an immensely challenging undertaking, but it comes with great joy to see the building and spaces shine again for generations to come".

"As the scaffolding comes down, it feels like unwrapping a gift for the residents of Beverley, at Christmas time, which I hope they will enjoy for years to come".

To paraphrase Dickens, "I have



endeavoured in this enchanting little building, to raise the Ghost of an Idea, which I hope will not put the residents and visitors of Beverley out of humour with the building, the disruption at times or with me!"

Richard finished by adding, "As Tiny Tim observed, God Bless Us, Every One! Wishing everyone a Merry Christmas and a Healthy and Happy New Year".



THE ENDURING SYMBOLISM OF RED AND WHITE AT CHRISTMAS

The iconic pairing of red and white dominates the visual landscape of the Christmas season, its significance woven from threads of ancient pagan tradition, Christian faith, and powerful modern commercialism.

This vibrant color combination is far more than mere decoration; it embodies key historical figures, seasonal elements, and the very spirit of the season.

The Deep Roots of Red

The prominence of red is rooted in both nature and religion. In the pre-Christian era, the holly



berry, with its striking red against the Winter green, was a crucial symbol of life and vitality during the darkest days of the year, revered for its ability to stay bright when all else faded.

This natural symbolism was later adopted by Christianity, where the color red took on the deeper meaning of the blood of Christ, representing the sacrifice and redemption central to the religious observance of Christmas. Historically, the color was also a staple of the original Saint Nicholas, who, as a 4th-century bishop, wore red and white robes.

This historical link was cemented in modern consciousness by American illustrators and, most notably, the influential Coca-Cola advertisements of the 1930s, which standardized the image of Santa Claus in his unforgettable bright red suit with white fur trim.

The Purity of White

White's role in the Christmas palette is inextricably linked to the Winter season and Christian doctrine. It symbolizes the purity, peace, and holiness of the celebration, representing the light entering the world.

In the Northern Hemisphere, white is the quintessential color of the season due to the

snow, which blankets the world in a serene, pure spectacle. This association with clean, untouched Winter landscapes makes white a perfect visual complement to the warmth of red. Crucially, white also forms the secondary color of the modern Santa Claus, found in the trim of his coat, his beard, and his hair, serving as the perfect, crisp contrast to the bold red.

A Timeless Combination

Together, red and white form a powerfully contrasting yet harmonious pairing that transcends mere aesthetic choice. They represent the earthly (natural life and sacrifice) alongside the celestial (purity and light).

While other colors contribute to the festive atmosphere, the enduring image of the red-suited Santa Claus against a white, snowy backdrop ensures that the combination of red and white will forever remain a foundational and essential symbol of the Christmas season.

Shane Cooper,
Stuarts of Drifffield,
Lincoln Way, Beverley,
HU17 8RH.



IN THE PICTURE WITH JOSH

As we look forward to the festive season ahead there are plenty of opportunities to capture photos of people and nature as the season brings about lots of changes.

Christmas lights and decorations brighten up the darker nights, allowing you to capture long exposures in cityscapes and landscapes, or focusing on family and friends, capturing natural moments at festive events indoors and outdoors.



Using the ambient light from lights or candles combined with subtle lighting helps create images with a warm, cosy glow.

When photographing the snow, especially when it's sunny, it's easy to over expose and lose details in the highlights, but using a polarising filter or under exposing the images slightly can keep that detail in.

If you're photographing decorations and lights, dusk can create a beautiful contrast of artificial

and natural lighting with some amazing colours in the sky.

If we are fortunate enough to get some nice snowy scenes, this can create some great wildlife images as well and make animals easier to spot!

Whatever you're doing for the festive season, have a great time!

You can find more information about my work and full portfolios on my website and my social media pages and if you have any questions don't hesitate to get in touch.

Instagram: [@joshharrison.photography](#)
Facebook: [@JoshHarrisonPhotography](#)
Web: [www.joshharrisonphotography.com](#)
Email: [info@joshharrisonmedia.com](#)



THE BENEFITS OF GETTING OUTSIDE - EVEN IN THE WINTER

When the days grow shorter and the temperature drops, it's tempting to stay wrapped up indoors with a hot drink and a good book.

But even in the chill of Winter, getting outside offers a wealth of physical, mental, and social benefits that make braving the cold more than worthwhile. Even a gentle 20-minute walk can lift your spirits and clear your mind, making the dark days feel a little brighter.



Cold weather might make you want to hibernate, but it's actually an excellent time to stay active. Your body works harder to stay warm, meaning you burn more calories during Winter exercise.



Heading to your local parkrun on a Saturday morning is a great way to combine community spirit with fitness. Whether you jog, walk, or volunteer it's a welcoming, free event that encourages everyone to get moving at their own pace.

Being outdoors, especially in natural surroundings, has been shown to reduce stress and improve concentration.

A walk on our lovely Westwood pasture or along a countryside trail gives your mind a break from screens and daily pressures.

It's a chance to think, reflect, or simply enjoy the peace and quiet.

Winter exercise offers its own rewards: peaceful paths, invigorating air, and a sense of accomplishment that comes from stepping out despite the cold.

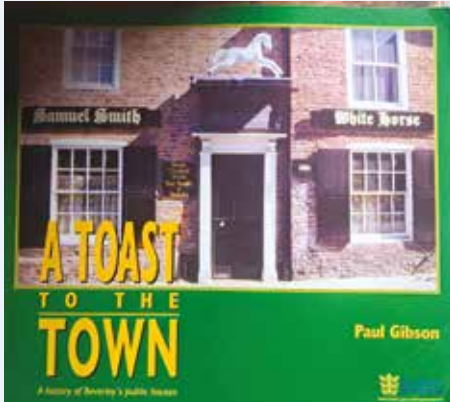
So, grab your coat, lace up your shoes, and head out the door. Whether it's to your local parkrun, a countryside trail, or just a quiet stroll after tea your body and mind will thank you for it.

Louise Barrett.



DISCOVERING THE LOST PUBS OF OUTER BEVERLEY

Last month I took you on a tour of the many lost pubs in the town centre, here we look at former watering holes on the fringes of Beverley's heart; again there are far more than most people realise. Both articles are indebted to this fine book; highly recommended if you can find a copy.



It is feasible to walk the entire route of these lost pubs, but if you cover them all, it's around 4 miles, a good way to walk off the Christmas pud though!



Let's begin on Highgate, heading down towards the Minster. One of Beverley's most popular pubs, Monks Walk is still trading, but just to its right at Number 25 is the location of the former Black Swan. The premises have an interesting history as the green plaque will reveal.



Now head down Flemingate passing two of our oldest pubs, The Sun & Lord Nelson. Towards Backside, we find the site of no less than 3 former pubs, close together in what was once a very busy trading area by the wharves and warehouses along the Beck.

What is now a vets, was formerly the large

Mariner's Arms pub, across the road lay The Buck, now a smart residence. Facing that in the old premises now occupied by a cafe, lay The Traveller's Rest, it still displays its stabling signage.



It's quite a stride to our next lost pub over on Coltman Avenue. What is now a convenience store was until quite recently a large estate pub, The Humber Keel.



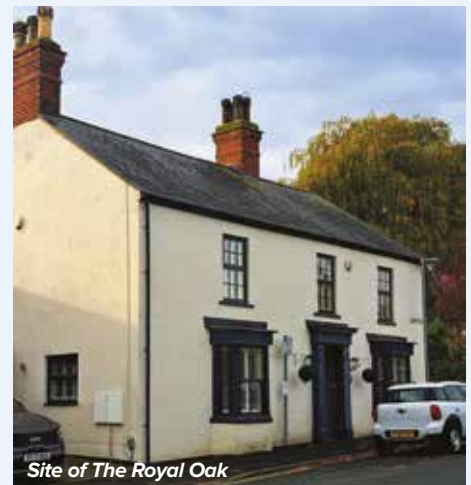
Our other lost pubs cover a large area. The Lady Le Gros stood at the Norwood level crossing until 2016. Head to the town centre and go up Wood Lane facing St Mary's. Number 25 has 'Blue Bell' etched in its door glass, the name of a once popular beer house that closed in the 1940s, it is possible that number 27 was also part of the pub.

Our next one closed in more recent times, The Royal Oak on Cartwright Lane is now a large house.

Head back into town along Keldgate and by the zebra crossing, Beehive House is built on the site



of the pub of that name which I recall visiting in the 1990s.



There were two short lived modern pubs to the south of the town. The Co-op on Lincoln Way was formerly the Sanctuary pub, whilst the large care home at the Morrisons roundabout was built in the early 1990s as The East Yorkshire pub but lasted only two decades.

So, if you've visited all, or most of the sites on foot, head to the nearest open pub for refreshment, because as we are seeing at The Tiger on Lairgate and The Moulders on Wilbert Lane, you can never be sure which will close next.

Compliments of the Season to all readers.

Ian Richardson - 6/11/25.



FLEMINGATE CHRISTMAS LIGHTS SWITCH ON



MARKET CROSS CHRISTMAS LIGHTS SWITCH ON



IS YOUR FUSE BOARD UP TO THE JOB THIS WINTER?

With the colder months now firmly here, we naturally start asking a bit more from our homes - the heating's on, the air fryer's going, the tumble dryer's working overtime, and the Christmas lights are back out.

That extra load can be fine - if your electrical system is up to it.

If your lights are flickering, sockets feel warm, or your fuse board is tripping regularly, it could be your home's way of telling you it's time for a check-up. An older fuse board might have been perfectly fine ten years ago, but modern life has changed what we ask of it. Add in a few seasonal extras and the strain starts to show.



We're not saying rush out and replace your consumer unit just because it's December - but if you're noticing things aren't working quite right, it might be a good idea to have it checked.

And while we're talking electrics - those old Christmas lights from the loft? It might be time to retire them. Modern LED fairy lights are brighter, safer, draw a fraction of the power, and cost next to nothing to replace.

Also, if you're running a few plugs for the tree and decorations, get yourself a decent four-way extension block - ideally one with surge protection. It's not a miracle fix, but it does offer some extra safety. If you're unsure whether your board is up to the job or just want some friendly advice, give us a ring. We'll be happy to take a look and let you know where you stand.

Visit: www.smartpower.co.uk Email: info@smartpower.co.uk
Call: **01482 205222**

MAKE IT AN EXCEPTIONAL CHRISTMAS WITH JAYNE AT LINK AGENCY

Like everyone, Jayne at Link Agency looks forward to a good festive season. Jayne commented, "Property sales during Christmas can be surprisingly active, as many buyers use the quieter season to plan for a fresh start in the new year".

To make the most of this opportunity, ensure your home feels warm and inviting, add festive touches like soft lighting, seasonal scents, and tasteful decorations to create a welcoming atmosphere for viewers. Whilst it can be difficult at Christmas, try to keep spaces tidy and clutter-free so potential buyers can imagine themselves settling in.

Once the festivities on Christmas Day are over, many people start to plan their future home purchases. The major property portals such as Rightmove, Zoopla and On the Market consistently demonstrate a sudden surge in interest on Boxing Day, in their property performance figures.

Jayne at Link Agency encourages clients to advertise their properties at this time, "With fewer listings, your property will stand out in the market."

Starting the year with a well-presented home and clear goals, sets the stage for a successful, stress-free move ahead. From Sale to Sold, Jayne can help every step of the way.





SMART POWER




PROFESSIONAL DEDICATED ELECTRICIANS

CALL 01482 205222

Based in Cottingham, serving East Yorkshire with Domestic, Commercial, and Industrial Electrical Solutions.

OUR SERVICES

- Fault Finding
- Internal and External LED Lighting
- Test and Inspection EICR
- EV Chargers
- Kitchen Electrics
- Consumer Unit Upgrades
- Full and Partial Rewires



SCAN NOW

CONNECT WITH US






Our team will always go the extra mile to ensure that you're delighted with our work.

WWW.SMARTPOWER.CO.UK

Jayne at linkagency










linkagency
Sold
01482 699007
www.linkagency.co.uk

Have you seen these signs?

linkagency
For Sale
01482 699007
www.linkagency.co.uk

"I dedicate my time and energy to clients throughout their property selling and buying journey, giving them the comprehensive, professional service they deserve."



01482 699007 (Beverley and Surrounding Villages)
www.jayneatlinkagency.co.uk | jayne@linkagency.co.uk

naea | propertymark

BEVERLEY'S TOURISM STARS SHINE AS WINNERS UNVEILED AT SPECTACULAR 15TH ANNUAL REYTAS

Beverley's finest tourism businesses took centre stage as the winners of the 15th annual Remarkable East Yorkshire Tourism Awards (REYTAs) were revealed at a glittering ceremony at Connexin Live.

Hosted by Hull-born comedian Amy Gledhill, the milestone event celebrated the remarkable people, places and experiences that make the region one of the UK's most welcoming and inspiring visitor destinations.

The REYTAs, organised by Visit Hull and East Yorkshire (VHEY), recognise excellence across every corner of the visitor economy.

Among this year's standout Beverley successes was WILD Organic Eatery, Remarkable New Tourism Business of the Year category, an impressive feat for a first-time entrant to the awards with Junk Bar, highly commended in the same category.

Gemini Chocolate, won the Remarkable Regenerative Tourism Award, and L'Opaline Bistrot, secured the Remarkable Taste of East Yorkshire Award as a flourishing hub for independent food and drink.



The Ferguson Fawsitt



Gemini Chocolate



L'Opaline Bistrot

In Walkington winning Remarkable Pub of the Year, The Ferguson Fawsitt and Dumble Farm, near Beverley, was crowned 'Gold' winner for Experience of the Year at the national awards in June after winning Remarkable Experience of the Year at the 2024 REYTAs for its unique 'cow cuddling' sessions.

This year's winner of the Remarkable Experience of the Year was Goat Yoga at Ings Park Alpaca, North Cave.



Dumble Farm



Botterill & Co

Chartered Certified Accountants



We are a modern and professional accountancy practice ideally located to serve businesses in Beverley and the surrounding area.

We utilise modern accounting technology to provide you with a cost effective, professional service.



Our services:

- Annual Accounts
- Tax Planning
- Management Accounts
- Tax Returns
- Company Formations
- Payroll
- Cloud Accounting
- Bookkeeping & VAT

For a free initial consultation please contact us:



Office: 01482 862240
Email: gareth@botterillco.co.uk
Website: www.botterillco.co.uk

1st Floor Offices, 40 Norwood, Beverley, HU17 9EY.

LEWIS NORTHEN FUNERAL DIRECTORS' MEMORIAL SERVICE 2025

On the 1st of December 2020, Lewis and Kirsty took the bold step to set up Beverley's only Independent Funeral Directors.

Five years on, Lewis has developed an unrivalled reputation for delivering a personalised and professional service, not only locally but also undertaking funerals in Scotland, and the four corners of England.

Lewis said "Five years have passed so quickly. We have built a great team who all care about making sure families get the support and care they need and the funeral for their loved one is all they could wish for. We look forward to being here for families for many years to come and continue with 'My Family Taking Care Of Yours'.



Lewis began a tradition of an Annual Memorial Service for all who have lost someone special in their lives.

Again, this year it will be held at Beverley Minster on Wednesday, December 17th at 6.30pm.

The service brings together the local community and gives time for reflection, love and support with others who are in a similar circumstance.

Lewis stated "This service has grown rapidly and we believe everyone takes some comfort from being there. It is a magical evening with Carols, words of support and the chance to light a candle in memory of your loved one."

Everyone is welcome and following the service there will be complimentary refreshments within the Minster. We look forward to seeing you there.

Any questions about this evening or if you wish to get in touch with Lewis Northen Funeral Directors, please call the office on **01482 888658** - 24 hours a day, 365 days per year.



LEWIS NORTHEN
FUNERAL DIRECTORS



MY FAMILY TAKING
CARE OF YOURS

Get In Touch
1 Lincoln Way, Beverley, HU17 8RH
info@lewisnorthyfuneraleldirectors.co.uk
www.lewisnorthyfuneraleldirectors.co.uk
01482 888 658





Born and raised in **Beverley**, we are proud of the funeral services we offer to our local community.

As a family business we want you to have confidence in us to support you from the first point of contact, throughout and thereafter. The moment your loved one comes into our care they will be treated with care and respect. We offer a comprehensive range of funeral services ensuring you receive the perfect funeral service for your loved ones.

We are available 24 hours a day, 365 days a year, we will guide and support your family throughout.

Five Years of Service: Beverley's Independent Funeral Director

My family taking care of yours
Beverley's ONLY Independent Funeral Director

Giving the personal touch to funeral services in
Beverley and surrounding areas.

Funeral plans, memorial jewellery, available 24/7 365 days a year.



I'VE BEEN THINKING... SAYS COLIN RAYNOR

December is surely a time for remembering all that has passed in the last twelve months. At times we have laughed at others, and often at ourselves, and then there have been times when we have felt sad and maybe even cried. So let's see if I can recall some of the highs and lows of this last year, although not always in chronological order.

Sport has always been for me one of life's great joys and I cannot understand those who do not share my passion for cricket and football in particular. I have however long since stopped trying to persuade those who think me I am so misguided.



I could eulogise for another couple of hundred words not only on the history of these two sports but the real excitement they can give me as I watch them performing at the top of their game.

So thank you to the Lionesses; to the England cricket team and to Hull Kingston Rovers for the real moments of magic they have provided us with in the past year.

One of the low points came when I received a diagnosis of a non-Hodgkin lymphoma last year and have continued to receive treatment at the Queens Centre at Castle Hill.

At times we seem to have been travelling nearly every week to the place I have spoken of before where 'friendly care, compassion and clinical excellence' are always available.

The future is uncertain but we are grateful that the journey is only about twenty minutes for us and we certainly have seen the new roadworks developing quickly.

You may also recall that I wrote recently of our sixtieth Wedding anniversary and this is where I give thanks for the blessing of having a wonderful family. In fact we have two families. Our biological family and our Church fellowship family who have been unstinting in their continual support over the months.

Our daughters arranged for us all to have a long weekend in Edinburgh and the wonderful memories we gained in that beautiful city will

remain with us for ever. As someone who was born before the start of the Second World War, and subsequently adopted before I was one year old, there are many aspects of my life in which I feel sincerely blessed not least with my life partner.



To be a father to two wonderful daughters and to have the joy of four amazing grandchildren, has also enhanced this last year.

As I say above I have always believed that we should be willing to laugh at our own misfortune so I will close with such an incident that took place recently, but not in Beverley.

On a visit to my wife's favourite large retail clothing shop we managed somehow to get ourselves stuck in the store's lift for an hour or so. The lights remained on and we were able to talk to those outside who were attempting to mend the lift.

Eventually the fire engine came with three firemen to rescue the two old codgers who were happily enjoying a chocolate wafer to pass the time.

So I will close this month with a quote from Oprah Winfrey who said,

Cheers to a New Year and a chance to get it right next time.



Find **your new home** this Christmas at **The Paddocks in Beverley**

Stunning 3 & 4 Bedroom Homes available to reserve

To find out more call the friendly team on

01482 904 341

or visit

newhomes.lovell.co.uk

THE **PADDOCKS**
— BEVERLEY —

LOVELL
HOMES

FOX MOBILITY- THE GIFT OF COMFORT THIS FESTIVE SEASON

As the festive season sprints towards us, many people look towards the gift of comfort and independence with thoughtful mobility presents.

Anne from Fox Mobility said, "This Christmas, items like walking sticks or lightweight wheelchairs can make moving around safer and easier, while cosy accessories such as heated blankets, thermal socks, and fleece-lined gloves help keep the chill away".

As you start to think about others or indeed writing a list for Santa, consider practical aids like non-slip slippers or hand warmers for extra comfort during cold Winter days. For those who love to stay active, portable seat canes or foldable walkers are ideal for outings and family gatherings.



Sometimes, the outside can be a whole lot better when you layer up with warm clothing made from breathable, soft fabrics to stay comfortable indoors and out.

As we approach the festive season, supporting warmth and mobility ensures loved ones can enjoy the festive celebrations confidently, comfortably, and with the freedom to move and join in.

Fox Mobility: 110-112 Walkergate, Beverley, East Yorkshire, HU17 9BT.
Tel: 01482 887799.
Email: info@fox-mobility.co.uk
Website: www.fox-mobility.co.uk

TC Patisserie

We make our own patisseries.

We are a French food shop complimenting our own products

We make Meals you can reheat at home bought over the counter or pre ordered, via our mailing list or messenger

We can cater for any occasion, buffets, dessert tables or full 3 course meals

We are open Tuesday-Saturday 9am - 4pm.



10 Lairgate, Beverley, HU17 8EE
 Tel: 01482 860884





Tel: 01482 887799
Email: info@fox-mobility.co.uk
110-112 Walkergate, Beverley, East Yorkshire HU17 9BT

- **Stairlifts**
- **Riser Recliner Chairs**
- **Walking Aids**
- **Power Chairs**
- **Scoters and Accessories**
- **Servicing and Repairs for your Mobility Equipment**

Need advice
about mobility
equipment?
We're here
to help!








DECORATING THE HOUSE FOR CHRISTMAS!

In the Winter months, after the leaves have fallen, the framework of the garden is revealed. Planting with shrubs that offer both structure, colour and more importantly fragrance at this time in the year are worth considering. There is nothing better than taking a garden walk.

Throughout the year some shrubs may appear to be of little value however during the Winter months their shape and form is highlighted, and more importantly the branches and leaves from *Ilex* (Holly) and *Hedera helix* (Ivy) can be used to decorate the house at Christmas.

A shrub that although spikey to handle is *Mahonia x media* 'Winter Sun', its leaves replicate the shape of holly, except there are numerous leaves to one branch which when using in a flower arrangement both lengthens and enhances the display.



As you can see in the photograph below, the yellow flowers are a feature from November to March. The shrub grows well in full sun, semi-shade or full shade and can reach a height of 5 metres, yet it can be pruned if needed.

The Christmas table flower arrangement was created from foliage in the garden which included Rosemary, a long-lasting fragrant herb, strands of ivy and some apples which were too small to eat however, from a display perspective looked outstanding.

A bunch of flowers had been purchased from a florist, but the rest was home grown!

One of the main jobs in the garden at this time of the year is to clear leaves. If you have an area where you can place the leaves and leave them to breakdown, the nutrient value of them the following year is outstanding.

I use them in the Spring or Autumn as a mulch in the shrub borders.

An idea for Christmas 2026 is to grow red

cabbage, in particular two varieties 'Red Drumhead' and 'Red Dutch' can be sown in May. Prick out the seedlings when large enough to handle, grow on and finally plant at 15-23cm (6-9inches) apart. Cover with a net to protect against pigeon's and butterflies.

They should be ready to harvest from November to May. A colourful and delicious Christmas treat!

<https://ordinarygardener.com>
Julie Dowding



RM JOINERY KITCHENS & BEDROOMS

QUALITY WORKMANSHIP FOR ALL YOUR FITTED FURNITURE NEEDS



KITCHENS • BEDROOMS • HOME STUDIES • BATHROOMS

Visit Our Showroom: Hull Bridge Road, Tickton HU17 9RT

01482 867389

rm.joinery@yahoo.co.uk | www.rmjoinerykitchens.co.uk

**FREE HOME
VISITS & DESIGN
SERVICE**

**Find us on
Facebook**

LET IT SNOW, LET IT SNOW, LET IT SNOW...



As I write, there are proper snowflakes drifting past the window and landing gently in the garden... you know the ones I mean, those big snowflakes, silent and fluffy, floating by and creating a hypnotic vision as they drift and dance, sometimes swirling and hurried... then calming a little and magically and oh so gently whirling to their eventual landing spot. There's nothing that gets me more in the mood for Christmas than snow.

What starts the excitement of Christmas for you? The first festive song on the radio, the smell of satsumas and clementines or seeing the latest designer-hot chocolate with seasonal cinnamon or orange; or do you get the urge to have a cosy afternoon by the fire, avoiding the frenzy outside and watch your favourite Christmas film.

One of my favourite's is the classic 1946 film *It's a Wonderful Life* with its story of how the actions of one individual, George, can positively impact a whole community. Despite being almost 80 years old, the story still resonates today with one person trying to do the right thing against an imposing corporation and proving that community support and human connection are more powerful than institutional dominance. George prioritizes compassion over profit - helping struggling families, offering fair loans and keeping people in their homes. At George's darkest moment he meets Clarence Odbody, AS2 (Angel Second Class), who earns his wings by showing George how diminished the lives of those he has touched would have been if he had never lived and sacrificed his dreams and personal ambitions.



Another favourite film, although not a Christmas classic, is the 2019 adaptation of Louisa May Allcott's book, *Little Women* which has snow and skating on lakes and key scenes set at Christmastime that highlight generosity of spirit. Sharing and self-sacrifice are evident when the family gift their Christmas breakfast to a penniless family whilst having little themselves - the very meaning of Christmas.

Take a moment to be mindful and absorb the seasonal sights, scents, sounds and flavours that resonate with you and remind you of Christmas-past or just give you that festive glow. Enjoy being you and relish the joys of giving, not just presents but time... presence not presents. For many years, my friends and I have a tradition of having a meal at a local restaurant rather than swapping gifts - what is more valuable than time spent with friends. Christmas is a great time to remind us that the best things in life are free - the company of friends and family and having a break to reflect, relax and revitalise in preparation for the New Year.

Whether it's Bing Crosby and David Bowie *pa-rum-pa-pum-pum*'ing to *The Little Drummer Boy* or Gavin and Stacey singing along to Elton's *Step into Christmas* that captures the mood for you, enjoy! May I wish you a happy, peaceful and joyous Christmas and remember, "Every time a bell rings an angel gets his wings".

Every Monday, you can take time out for yourself with the free mindfulness session from 7.15pm to 7.45pm. For more information visit www.francesdunning.com or contact me, Fran Dunning on **07973 819867** for details of mindfulness zoom link.

All About You Hypnotherapy

Helping You Get Peace of Mind in Practical Ways

I've been helping people of all ages increase their levels of confidence and improve their life for over 20 years using hypnotherapy.

I can help you reduce anxiety, get rid of fears and phobias and embed positive habits to increase your levels of health and wellbeing.

Based on Victoria Dock and available face to face or via Zoom globally.

Let me help you to enjoy a new sunrise

Fran Dunning
Clinical Hypnotherapist & Provider of Mindfulness in the Workplace
Victoria Dock, Hull
Mobile: 07973 819867
e-mail: info@francesdunning.com
website: www.francesdunning.com

Monks Walk Inn

19 Highgate, Beverley HU17 0DN
Tel: 01482 880871
www.monkswalkinn.com

Monks Walk Public House [monkswalk](https://www.instagram.com/monkswalk)

Merry Christmas and a Happy New Year

to all our friends, neighbours and customers

Thank you for your support in 2025

Enjoy some Christmas cheer around our real fire

- GOOD BEER •
- GOOD COMPANY •
- GOOD CONVERSATION •

WE LOOK FORWARD TO SERVING YOU!

Sleigh loads to do this winter at

What's On

No need to book...

VOICES OF CHRISTMAS

FRIDAY 28TH NOVEMBER

A joyful evening of music to celebrate the start of the festive season. Join us for carols, canapes and music from 5.30pm - 8.30pm with St Mary's Church Choir followed by an acoustic and vocal artist.

TWILIGHT SESSIONS

FRIDAY 5TH, 12TH & 19TH DECEMBER

Live popular and Christmas songs from our acoustic and vocal artist from 5.30pm - 7.30pm.

MISTLETOE & MELODIES

MUSIC NIGHT

TUESDAY 23RD DECEMBER

Join us for a festive evening of music and merriment from 5.30pm - 8.30pm.

Wrap up warm and toast the season in our cosy tent and celebrate with friends and family.

AWARD WINNING FATHER CHRISTMAS VISITS THE BEVERLEY ARMS

TUESDAY 9TH & 16TH DECEMBER

Bookable dining outside in the festive tent, with a visit from Father Christmas. £20 per child (includes main meal from the Children's Menu and a gift).

NEW YEAR'S EVE

WEDNESDAY 31ST DECEMBER - 7.30pm - 12.15am

Why not book for dinner with us on New Year's Eve and adjourn to the tent afterwards to enjoy an evening of music. Toast in the New Year with friends and family in our cosy tent - don't forget to wrap up warm.

Events
IN THE TENT



Festive dining in our outdoor tent and NYE are all bookable by scanning this QR code

All events in the tent take place outdoors — inside our cosy, heated tent!

It's warm and welcoming, but the great British weather can still surprise us — layer up and dress for the weather.

The Beverley Arms, 25 North Bar Within, Beverley, HU17 8DD
01482 296999 | beverleyarms.co.uk

EAST RIDING LEISURE LAUNCHES 'MERRY FITNESS' PROMOTION WITH BIG SAVINGS ON MEMBERSHIPS

Running until Wednesday, 31st December, East Riding Leisure is spreading festive cheer with its Merry Fitness promotion, offering savings across all membership options.

Members can enjoy six months membership for just £72.50 or 15 months for £175.* There is also the one month premier option at £28 which allows full access to all leisure facilities, all day, seven days a week.

Every membership purchased during the promotion includes a one-week free pass to share with a friend or family member.



Joining the promotion gives members access to all 10 centres, nine gyms, eight pools and more than 1500 classes per week.

Councillor Nick Coultish, East Riding of Yorkshire Council's Cabinet member for culture, leisure, tourism and planning, said: "Whether you are an avid gym user, or new to working out, swimming fan, or group fitness enthusiast, this is a great way to invest in your health and wellbeing."



"Merry Fitness is always popular, and I would encourage everyone to sign up."

Merry Fitness memberships are available to purchase online or in person at any East Riding Leisure centre until Wednesday, 31st December. Full payment is required at the time of joining.

For full details and to buy online, visit:
www.eastridingleisure.co.uk/merry-fitness

*based on 15 months afternoon premier membership.

Memberships

**EAST RIDING
LEISURE**

MERRY Fitness

1 month
premier
membership
for just £28

6 months
for the price
of 5 from
only £72.50*

15 months
for the price
of 12 from
just £174*

All memberships include a FREE week's pass**

AVAILABLE FROM

17 November - 31 December 2025

INVEST IN YOUR
health and wellbeing
THIS CHRISTMAS

For more information visit eryc.link/MerryFitness

*Based on afternoon premier membership.

**Terms and conditions apply.

EAST RIDING
OF YORKSHIRE COUNCIL

eastridingleisure.co.uk
[@ERLeisure](https://www.facebook.com/ERLeisure)
[@ERLeisure](https://www.instagram.com/ERLeisure)

Your home for **QUALITY KITCHENS**



Pop into branch to meet Paul & Jackie, enjoy a coffee,
& let's chat through your kitchen project to see how
we can help you create your ideal space.

Swinemoor Lane **Beverley**
HU17 0JZ **01482 880088**

FREE
DESIGN
SERVICE

mkm.com

MKM



AMANDA TRAVEL - A CHRISTMAS GIFT FOR ALL



As the year draws to a close, excitement builds for Christmas celebrations and New Year preparations.

The festive season is the perfect opportunity to gather loved ones, share joy, and reflect on the year gone by planning for the year ahead.



Start by planning not only for Christmas but for perhaps a special holiday, a weekend break, a Winter getaway, suggesting the best gift of all "Togetherness" with a special family vacation.



With Christmas plans in place to decorate the tree, hang twinkling lights, and prepare thoughtful gifts to spread cheer.

Organise festive meals, whether it's a traditional roast or a cosy family gathering, think about special times ahead, these could unfold in homemade treats or handwritten cards. Making memories that last a lifetime.

Struggling to think of that special gift? Planning ahead, whether booking celebrations, arranging travel, or stocking up on essentials, embrace the spirit of togetherness, gratitude, and renewal as you celebrate the festive season and welcome a bright, hopeful year ahead.

Amanda McConnell, Travel Counsellors.

Tel: 01482 770540

Email: amanda.mcconnell@travelcounsellors.com

Web: www.travelcounsellors.com/amanda.mcconnell



SHOP LOCAL WITH AWARD WINNING GEMINI CHOCOLATE THIS CHRISTMAS

Gemini Chocolate is celebrating in sustainable style after scooping the Remarkable Regenerative Tourism Award at the REYTAs.

The win highlights the company's dedicated, wholehearted commitment to doing business in a way that restores the planet - one delicious bar at a time.

With Soil Association organic certification, Gemini Chocolate holds itself to rigorous standards that ensure every bean and ingredient supports biodiversity, healthy soils, fairer farming systems and a lighter carbon footprint.

Their bean-to-bar approach means everything happens on-site: roasting, crafting, wrapping and happy dancing. All cacao comes from the Amazonas region of Peru, where ancient varieties flourish in rich agroforestry systems.

These beans carry depth of flavour shaped by rainforest soils, shade-grown cultivation and farmers who nurture the land with generations of knowledge. That's one of the many reasons Gemini Chocolate uses these beans.

Small batch production keeps waste low and quality sky-high, all while championing mindful circular economy principles. Even the packaging is friendly to the planet, with recyclable or home-compostable materials used throughout - and delivery boxes given a second life whenever possible.

Visitors can peek straight into the chocolate kitchen through its giant glass wall, watching the process unfold while learning about sustainable food systems. With all products free from dairy, gluten, and refined sugar, Gemini Chocolate makes regenerative indulgence accessible to everyone.

And with Christmas approaching there's never been a better time to shop local and support a business regenerating both community and planet.

**Gemini Chocolate,
33 North Bar Within,
Beverly, HU17 8DB.**



W H Halmshaw Ltd



Our Hull and Beverley showrooms are open
Monday to Friday 9am-5pm & Saturday 9am-1pm.

Our Hull and Beverley trade counters continue to open Monday to
Friday 8am-5pm & Saturday 9am-1pm.

Your Local Bathroom Suppliers, Plumbing Merchants & Glass
Specialists with Showrooms in Hull & Beverley.

FOLLOW THE DUCK!

See me on the back of our vans

#followtheduck

tweet us a pic when you spot
the duck to @whhalmshawltd



Merry Christmas and a Happy New Year to all our customers, old and new

Please Note Our Christmas Closing Times:

Trade Counters Close December 23rd at 5pm and Open January 2nd at 8am. Showroom Opens January 2nd at 9am.

W H Halmshaw Ltd, Inspirations Works, Annie Reed Road, Beverley, HU17 0LF.

T: 01482 867142 • www.halmshaws.co.uk

BEVERLEY AC CONTINUES TO MAKE A DIFFERENCE

Representatives of Beverley AC were delighted to meet with young people and volunteers at the newly opened Cherry Tree Youth Hub to present a cheque for just over £5,000.

The Cherry Tree Community Centre is one of Beverley ACs nominated local charities for the year. 2025 was a very successful year in terms of fundraising, enabling them to support the Cherry Tree Community Centre.

Jackie reported, "It was great to meet some of the young people who enjoy the facilities of their new meeting space and hear their plans for using the monies raised".

Club members took part in a plogging session (jogging and litter picking). The group of 22

picked up over 20 bags of rubbish from the train station - Minster - Flemingate - Leisure Centre area, with another of their charity partners, the brilliant Wombles of Beverley.

Beverley AC in 2026, look forward to continuing their relationship with the Cherry Tree Community Centre, as well as Beverley Urban Gardeners, the Wombles of Beverley and Beverley Repair Café.

December will see Father Christmas get festively fit by taking part in the Club's annual Santa Run, on Wednesday 10th December, accompanying Club members as they enjoy a socially festive run around Beverley before enjoying festive refreshments.

Look out for Bev AC and give them a wave

and a festive cheer! The running Santas will be fundraising for their nominated charities the Cherry Tree Community Centre and the Wombles of Beverley.

Do not forget to look out for the Club's tree at Beverley Minster's Christmas Tree Festival!

Do go along and enjoy the festival and their tree amongst the 150 other trees and well done to Laura Egan for organizing Beverley AC!

New members, whatever your age and level, are always welcome and further details about the membership and what the Club has to offer to its members can be found on the Club's website: www.beverleyathleticclub.co.uk



Beverley & ER Golf Club

Winter Memberships now available

Just £350 for 4 months

see beverleygolfclub.co.uk for details



Telephone: 01482 869111
sales@rosesofbeverley.karoo.co.uk



The Kitchen Factory, The Courtyard,
Tokenspire Business Park, Beverley
HU17 0TB

Monday to Friday 9am - 5pm | Saturday 9am - 1pm

Roses Kitchens - proud to serve Beverley for the last 25 years

Coming Soon
ROSES BEDROOMS

I would love a



kitchen

You will adore your



bedroom

Please call 01482 869111 to book a viewing

MANY MORE OF OUR CUSTOMERS KITCHENS ON OUR WEBSITE

5 STAR RATED OVER 100 GOOGLE REVIEWS ★★★★★

Visit **www.roseskitchens.com**

to see our customers kitchens and read what they have to say about us

Telephone: 01482 869111





FESTIVE COMEDY CORNER

Things that make you laugh!



What is the best parent's Christmas song?
Silent Night!

What did Adam say to Eve on the day before Christmas?
It's Christmas, Eve!

What is the best Christmas gift for a bald man?
A comb, they never part with them!

What does Santa want for Christmas?
A garden "ho ho ho"!

Which athlete stays warmest at Christmas?
The Long Jumper!

WHERE IN BEVERLEY?

Where in Beverley would you find this landmark? Answer on Page 40.



WHAT IS IT?

Can you work out what this festive image is? Answer on Page 40.



DOT TO DOT



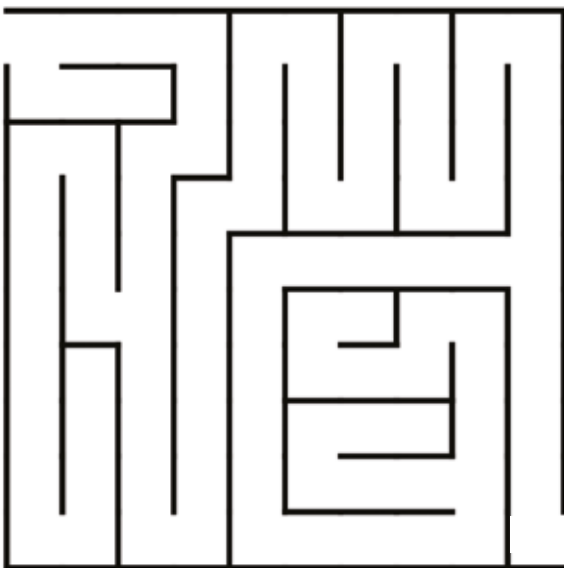
What do you think the picture will be?
Connect the numbers to discover who might be pulling Santa's sleigh this Christmas! Then once you've joined the dots, you can colour the red nose in!

QUOTE FOR THE MONTH

"From the home to the heart, from one person to another, the joy of Christmas brings us closer together"



Can you help Santa through the maze to find his sleigh?



CHRISTMAS MAZE



CHRISTMAS TEASERS



What has a mouth but is never hungry?
A river.

In Beverley, which Building has the most stories?
The Library.

What has teeth but not for eating?
A saw.

What can you drive, but you cannot steer?
A golf ball.



On Reflection where will you find the Ducks?
Answer on Page 40.



BUMPER CHRISTMAS WORDSEARCH

| | | | | | | | | | | | | | | | | | | | | | | | | |
|---|---|---|---|---|---|---|---|---|---|---|---|---|---|---|---|---|---|---|---|---|---|---|---|---|
| M | L | T | T | I | P | P | N | C | C | P | S | K | X | Y | I | J | S | I | V | F | I | R | C | X |
| O | Q | E | T | Y | S | I | H | S | A | I | E | J | M | Q | W | E | L | K | D | M | Z | E | V | C |
| W | L | C | S | E | D | R | Q | L | R | N | M | W | N | K | L | U | I | W | B | V | X | T | D | W |
| L | H | L | V | N | I | O | J | E | O | T | A | F | M | Z | N | E | J | B | Q | U | R | T | K | D |
| B | P | L | G | S | I | H | M | I | L | T | G | Z | Z | U | Z | E | R | A | I | V | A | I | F | N |
| Z | E | O | T | Q | L | T | G | G | S | F | S | U | Q | E | L | O | L | Y | F | N | J | L | T | B |
| I | C | M | R | D | X | S | R | H | S | H | P | O | Q | R | U | D | J | S | S | R | G | G | U | Y |
| Z | A | Y | Y | F | X | L | D | A | E | N | X | J | R | M | A | M | L | F | L | X | S | Q | S | P |
| S | T | S | G | Y | G | M | U | G | U | K | O | C | N | F | A | M | I | L | Y | L | F | W | X | W |
| X | O | S | A | Q | O | N | Y | E | M | R | K | S | N | O | I | T | A | R | O | C | E | D | C | K |
| V | S | T | T | R | D | C | U | D | E | R | E | I | N | D | E | E | R | W | X | Z | M | B | E | E |
| J | M | F | K | F | B | U | S | T | T | E | J | L | P | L | B | K | B | P | X | G | C | D | Z | Y |
| J | R | I | G | D | W | R | H | A | R | E | T | S | N | I | M | U | M | H | R | V | S | D | W | S |
| B | V | G | G | O | R | G | L | M | N | I | F | C | M | Y | C | B | B | Q | Q | I | Q | N | C | D |
| S | Y | R | I | U | U | N | U | V | J | T | S | R | Q | M | N | V | P | O | N | N | K | J | L | T |
| F | J | E | C | A | P | A | N | T | O | T | A | Z | I | J | K | F | J | G | Q | M | N | P | H | O |
| Q | I | F | L | V | H | V | L | H | S | W | S | W | F | I | E | W | X | I | Y | E | R | J | E | X |
| O | T | L | W | P | D | H | W | O | N | S | D | D | Y | F | N | N | X | L | R | I | A | J | H | W |
| Q | P | E | M | T | S | L | Y | P | D | W | E | I | V | K | G | D | I | Y | T | T | I | J | M | D |
| G | X | C | S | S | U | F | G | H | A | E | C | I | A | X | E | C | S | B | R | E | H | O | J | G |
| U | W | T | F | X | U | M | P | K | F | R | E | N | V | Z | U | G | F | E | S | J | U | O | J | B |
| U | E | I | U | O | D | S | E | W | T | J | M | I | Y | V | N | P | M | J | O | F | V | L | B | I |
| I | E | O | G | G | C | F | M | N | J | P | B | A | Q | V | B | W | P | Z | H | S | O | X | N | J |
| U | R | N | V | L | M | Y | T | Q | J | G | E | M | E | K | M | B | K | D | J | V | U | M | W | S |
| P | Z | D | A | N | A | J | B | B | E | U | R | S | F | O | S | D | E | S | S | G | Y | X | W | H |

BELLS
CAROLS
CHRISTMAS
DECEMBER
DECORATIONS

ELVES
FAMILY
FILMS
FRIENDS
FROST

GAMES
GIFTS
GLITTER
LAUGHTER
MINSTER

PANTO
PUZZLES
REFLECTION
REINDEER
SANTA

SINGING
SLEIGH
SNOW
THEATRE
TINSEL

DREAM DOORS®
NEW LIFE FOR OLD KITCHENS

**THINKING ABOUT
UPDATING YOUR
KITCHEN?**

WE WISH YOU
Merry Christmas

Save **up to 50%** vs a Full New Kitchen

Proudly transforming kitchens across the East Riding of Yorkshire

01482 861653

SWINEMOOR LANE, BEVERLEY HU17 0LN

WILSONS WHEELS - GIFTS THAT GO MILES

Wilsons Wheels, based on Grovehill Road, delivers the gifts that put smiles on faces of all ages, with a great selection of bikes and accessories to choose from.



Nathan from Wilsons Wheels added, "Apart from the gift of a bike, that is just the start. Cycling at Christmas is a great way to stay active, enjoy the crisp Winter air, and take in the festive lights, making it a Christmas to remember".

Cycling is also an eco-friendly way to travel to gatherings or run errands during the busy season. To stay safe and warm, wear bright, reflective clothing and

ensure your bike has good front and rear lights for visibility on darker days.

As it gets dark, the temperatures start to drop, the key to staying warm is to "Layer Up" - with clothing to trap heat and a waterproof outer layer to protect against wind and rain. Gloves, thermal socks, and a neck warmer help keep extremities comfortable.



Do not forget or do not make the mistake, plan routes with well-lit paths and avoid icy areas when possible. Cycling boosts mood, supports fitness, and brings a sense of freedom, helping you balance indulgence with well-being during the festive season.



Pop in store to see the new 2026 bike range ready for Christmas

WILSONS WHEELS

T: 01482 882881

W: www.wilsonswheels.co.uk E: info@wilsonswheels.co.uk

CHRISTMAS CLUB NOW AVAILABLE

• Adult Bikes
• Children's Bikes
• Electric Bikes

• Clothing for all cycling weather
• Parts and accessories

89a Grovehill Road, Beverley, East Yorkshire HU17 0EJ

NOW OPEN: Monday - Saturday 9am - 5pm
Sunday: CLOSED - Out riding our bikes

WHAT IS IT ANSWER

It was Santa's belt!

WHERE IN BEVERLEY ANSWER

The Beverley Arms Hotel

FIND THE DUCKS ANSWER

You should have found those ducks on the Halmshaw advert on Page 35.



EAST RIDING THEATRE PRESENTS

The Snow Queen

4th - 27th December 2025

£30.00 - £15.00



ert

EAST
RIDING
THEATRE

WRITTEN BY ANNA WHEATLEY
ADAPTED FROM THE HANS CHRISTIAN ANDERSEN TALE
DIRECTED BY RICHARD AVERY



LAIRGATE
FINANCIAL

The Snow Queen Trail

Join The Snow Queen Trail and explore
Beverley as you hunt for characters from our
sparkling Christmas show!

November 18th - 27th December

Return your sheets to ERT for a sweet treat

ert

EAST
RIDING
THEATRE



WHAT'S ON IN BEVERLEY

Tell us about your event!

E-mail info@justbeverley.co.uk

Telephone **01482 679947**

For more events visit
justbeverley.co.uk/pages/news

Until 31st December

Beverley Reindeer Rampage

A self-guided Christmas trail around Beverley's shops, cultural sites and eateries. Pick up a free trail sheet from Beverley Tourist Information Centre at the Champney Treasure House.

Until 4th January

Christmas Tipi Bar

Flemingate Centre Beverley 11am - 5pm.

Thursday 4th to Saturday 27th December

The Snow Queen

ert. Evenings and Matinees - Tickets £15 - £30.

Friday 5th December

Mamma Mia Christmas Party

Bottomless Party, Beverley Hills Diner, 5pm & 8pm.

Friday 5th to Sunday 14th December

Christmas Tree Festival

Beverley Minster, transformed into a sparkling forest of festive creativity. Visitors can wander through more than 150 beautifully decorated Nordman firs, each telling its own unique story.

Saturday 6th December

Welcome Yule - Ancient music for the festive season - The York Waits

St Mary's Church, North Bar Within, Beverley. 12 noon. Tickets £15 (£10 concessions). boxoffice@mcem.co.uk

East Riding Concert Orchestra - The Snowman

Beverley Parkway Cinema - noon, 2pm, 4pm, 6pm. Tickets Parkway Cinema - Various Prices.

Organ Concert - Christmas Spectacular

Beverley Minster, 7.30pm. Tickets £10.

Tuesday 9th December

Beverley Minster Christmas Concert

In aid of Macmillan Cancer Support. 7pm. Tickets £15. www.macmillan-organthuse.com/cf/beverley-christmas-concert-2025

Friday 12th December

Beverley Chamber Choir Christmas Carol Concert

Music Director - PR Dewhurst. 7.30pm - 9.15pm. St Mary's Church, Beverley. Tickets £12 reserved, £10 unreserved, accompanied children Free. Beverley Tourist Information - 01482 391672. www.beverleychamberchoir.org or on the door from 7pm.

The Darkest Midnight in December: Gareth Davies-Jones Christmas Acoustic Tour 2025

Christmas carols and often drift by on a high street wave of over-familiarity. Rediscover them in a fresh light through Gareth's music. Gareth returns to Beverley for a special night of Christmas music at St Nicholas' Church, Holme Church Lane, Beverley, HU17 0QP. 7.30pm.

Friday 12th & Saturday 13th December Carols by Candlelight

Beverley Minster. Various Times. £6.50 & £3.50.

Saturday 13th December

Country Music Christmas Extravaganza

Bottomless Party, Beverley Hills Diner, 8pm.

Saturday 13th - Tuesday 30th December

Dick Whittington Panto

Parkway Cinema, Beverley. Tickets various prices.

Sunday 14th December

Beverley Festival of Christmas

www.beverleyfestivalofchristmas.co.uk 10am - 4pm.

Friday 19th December

JazzMakersCollective

Superb Live JAZZ! Plus invited guest musicians Alternate Fridays at the Clubhouse Beverley. Book a table for dining or just come for the jazz. (...and next year plus guest musicians from January 16th) at Beverley & East Riding Golf Club, Beverley, HU17 8RG. Tel: 01482 868757.



Mamma Mia Christmas Party

Bottomless Party, Beverley Hills Diner, 5pm & 8pm.

Saturday 20th December

East Riding County Choir with Beverley Minster Choir and Black Dyke Band - Handel Messiah

Beverley Minster. 7pm - 9.30pm. Tickets £25, £20, & £12. Beverley Tourist Information - 01482 391672. www.eastridingcountychoir.org or on the door from 6.30pm.



Elf Jingle Jangle

Family Breakfast, Beverley Hills Diner, 9am.



The Girls Who Stole Christmas

Bottomless Party, Beverley Hills Diner, 8pm.

Sunday 21st December

Beverley Male Voice Choir - Prelude to Christmas

woll Gavel United Church, Beverley, 2.15pm. Tickets £10 from T.I.C., Beverley Music Emporium, The Dog & Duck, Ladygate.



Elf Jingle Jangle

Family Breakfast, Beverley Hills Diner, 9am.

Monday 22nd December

Breakfast with Santa

Family Breakfast, Beverley Hills Diner, 9am.

Tuesday 23rd December

Breakfast with Santa

Family Breakfast, Beverley Hills Diner, 9am.

Wednesday 24th December

Breakfast with Santa

Family Breakfast, Beverley Hills Diner, 9am.

Monday 29th December

Beverley Ghost Walks

Winter 2025/26 - Outside Mountain Warehouse, Toll Gavel. 7.15pm. Tickets on Eventbrite.

Wednesday 31st December

New Year Party

Bottomless Party, Beverley Hills Diner, 9pm.



Rotary Market Cross Christmas Memory Tree

Following the traditional Christmas lights switch on at the Market Cross, and the Switch On of the Rotary Christmas Memory Tree, the memory tree will be manned on the following dates, presenting people to write notes in memory of loved ones.

Saturday 13th December

Sunday 14th December - Festival of Christmas

Saturday 20th December

On Friday 2nd January 2026, labels will be removed and delivered to Beverley Minster.

In addition, Beverley Rotary Club will be out and about with Santa and his sleigh visiting children's nurseries, care homes, schools, community groups and other organisations around the Beverley area.

They will also be supporting the Christmas Tree Festival in the Minster.

DISCOVER THE MAGIC AT OUR

FLEMINGATE
BEVERLEY

FESTIVE WEEKEND

TIPI
CHRISTMAS
BAR

CELEBRATING
10
YEARS
FLEMINGATE
BEVERLEY

SATURDAY 13TH &
SUNDAY 14TH
DECEMBER 2025

MAKERS
MARKET
(SUNDAY ONLY)



JUST
£2
PARKING
FOR 3 HOURS

LIVE
MUSIC &
ENTERTAINMENT

CHILDREN'S
FUNFAIR
RIDES*



PLUS

OUR GIANT SNOW
GLOBE IS BACK*

Grab your family and friends for the perfect
festive photo taken by our professional
photographer inside our fantastic Snow Globe!

FANTASTIC FOOD & DRINK · PERFECT PRESENTS & GIFTS





Christmas



TREE FESTIVAL 2025

Friday 5th - Sunday 14th December

AT BEVERLEY MINSTER

Wander amongst our 150 beautifully decorated trees, enjoy live choirs, sip steaming hot chocolate, and get crafting at festive workshops. Children can take part in a fun Christmas quiz – and they won't want to miss the brand new Santa sleigh, perfect for family photos. A magical way to celebrate Christmas in Beverley's most atmospheric setting.

Doors open each day at 10am with final entry at 4.15pm
Late night opening: 10th & 11th December. Last entry 7pm
Quiet Sessions: 10th & 11th December. Doors open at 9am
Entry: Adults £5, Accompanied children FREE

